

The new amBX Light-Scene Engine



Introducing the latest amBX system for dynamic and intelligent lighting control for the most demanding projects of today

The amBX Light-Scene Engine has been designed and developed to take intelligent and intuitive lighting control to new levels. Built on the proven amBX lighting control technology and abstracted design model, Light-Scene Engine brings new possibilities for interactive lighting and putting total control in the hands of the user with simple yet powerful apps and user interfaces. amBX Light-Scene Engine is suitable for projects of all sizes and for single or multiple location lighting installations.

Highlights:

- Full ambient, dynamic and interactive lighting control
- Simple and effective controls for non-technical users
- Full IP connectivity for remote setup, control and programming
- Individual multi-room control for up to 32 spaces
- Designed for integration with 3rd party systems via an open IP-based API
- Dynamic lighting effects direct from audio, video and games content
- Rapid set up and configuration with no programming required
- Supports up to 256 Light-Scenes for each controlled space

amBX Light-Scenes simplify complex lighting control

Light-Scenes are collections of settings and parameters for determining exactly the right lighting experience required. From simple static lighting to the most dynamic and interactive experience, an amBX Light-Scene ensures consistency of experience in every amBX controlled installation. Light-Scenes manage the colour, location, movement, brightness and all dynamic aspects of lighting. They can be pre-defined or they can change dynamically in response to external triggers such as sensors, audio or video input and also from controls within the amBX apps. In this way Light-Scenes deliver powerful and comprehensive control yet are very easy and flexible to use, and there's no programming required.

Ambient Light-Scenes manage the lighting in each space and any requirements for colour, colour changing, movement, direction and brightness.

Audio Light-Scenes react dynamically and in real time to sound input, such as music, to turn the whole space into the experience

Video Light-Scenes react in real time to any video image to extend the experience beyond the screen, adding impact and immersion.

Introducing the new amBX Light-Scene Engine system

amBX Light-Scene Engine has standard capability to run and access up to 256 different Light-Scenes in each individual space within an installation. Light-Scenes are available from the Light-Scene library and for installers on the amBX website and can also be designed to bespoke requirements.

Full control in your hands!

The unique amBX technology allows for new levels of user interface design with the capability to make complex and difficult-to-use lighting control a thing of the past. Controls are delivered as touchscreen apps for smartphones and tablet PCs with a Master Control system resident on the system server. The apps can be configured for the venue and customised to the Light-Scenes required in each space. For example, some clients prefer to limit the control from one app to a single space, whereas others prefer multiple spaces to be controllable from within a single app.

The system is flexible enough to suit all projects and can be fully customised for special requirements.

amBX Colourscaper

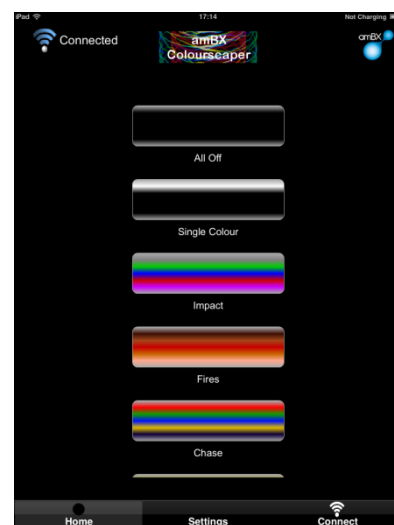
The Colourscaper App offers complete control of lighting in each space. The main functions are:

Light-Scene selection: a single touch will smoothly transition the lighting from the current Light-Scene to the one selected.

Colour Selection: the colour palette of each Light-Scene can be easily changed in seconds from the pre-set colour library, a full colour picker or even the exact colour reference data.

Brightness & Saturation: simple slider controls to get the light levels just right.

Update Light-Scenes: the Colourscaper will synchronise to the Light-Scenes installed in the Light-Scene Engine in order to keep up-to-date with any changes made to the installation.

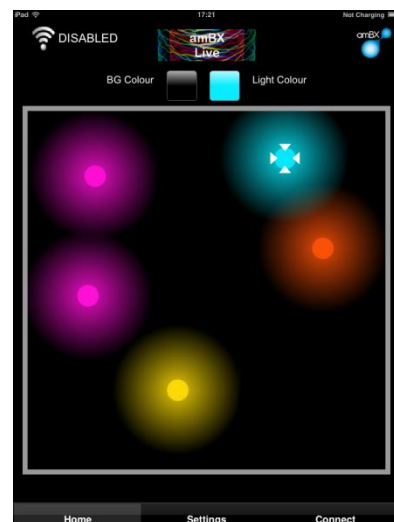


amBX Live

The amBX Live App allows the space to be easily set up by selecting colours for different parts of the room or area.

The screen represents the floor layout of the room and, for example, by simply clicking in the right-hand corner you have control of the lighting in the right-hand corner of the real room.

Click and drag to move the colour around and the effects appear in real time in the real room to allow rapid ambience creation for the right effect every time.



Designed to control whole projects but also for easy integration

amBX Light-Scene Engine can manage complete lighting control over any installation from a few fixtures to thousands of lights. Its unique architecture allows it to manage up to 32 spaces with up to 27 independent zones within each space, so a total of 864 zones and with any number of lights within each zone. amBX Light-Scene Engine is designed for connection to other systems and devices which have a role to play in the management of lighting in the building or project, for example sensors for presence detection or daylight

measurement and also automation and building control systems. Light-Scene Engine has an http IP protocol which is available for installers and integrators and can also be used for managing and configuring bespoke requirements, which makes it widely compatible with other third party systems and devices.

Light-Scene Manager – the complete set up and management tool for Light-Scene Engine

The Light-Scene Manager software is used during the installation of Light-Scene Engine and for in-life management of the installation over any changes or updates required. Its main functions are:

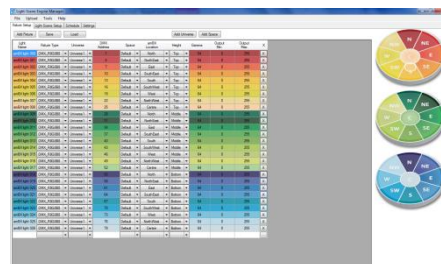
Fixture Setup: rapid configuration of the spaces, zones and locations for all the lighting fixtures in the installation

Light-Scene Setup: selection of all the Light-Scenes required for the project.

Schedule: setup a timed schedule for Light-Scenes for each area

Settings: brightness and saturation settings

Light-Scene Manager can be used for remote setup of Light-Scene Engine over a web-connected network.



Benefits of Light-Scene Manager for Lighting Applications

In Hospitality & Venues

- Sophisticated lighting effects and control without complex programming
- Rapid setup and Light-Scene selection for every event or show-round
- Dramatically enhances any audio, video or presentation

In Residential

- Single installation for multi-room control
- Integrates with 3rd party controllers and automation systems via open http API (REST)
- Dynamic and interactive Light-Scenes to suit every project

In Architectural

- Cost effective control for architectural installations of any size
- Adds presence and ambience to buildings and municipal spaces
- Interactive effects alter with time of day/year, temperature etc.

In General Commercial

- Cost effective lighting control for non-technical users in multiple space installations
- Integrates with 3rd party control and automation systems for upgrades and retro-fit
- Installations and configurations can be easily managed locally and via internet

In Retail & Advertising

- Centralised and local control for multiple sites
- Add cost-effective dynamic impact to any outdoor site
- Schedule Light-Scenes for optimum lighting by time of day, store layout, promotion etc.
- Optimise energy management throughout the retail space

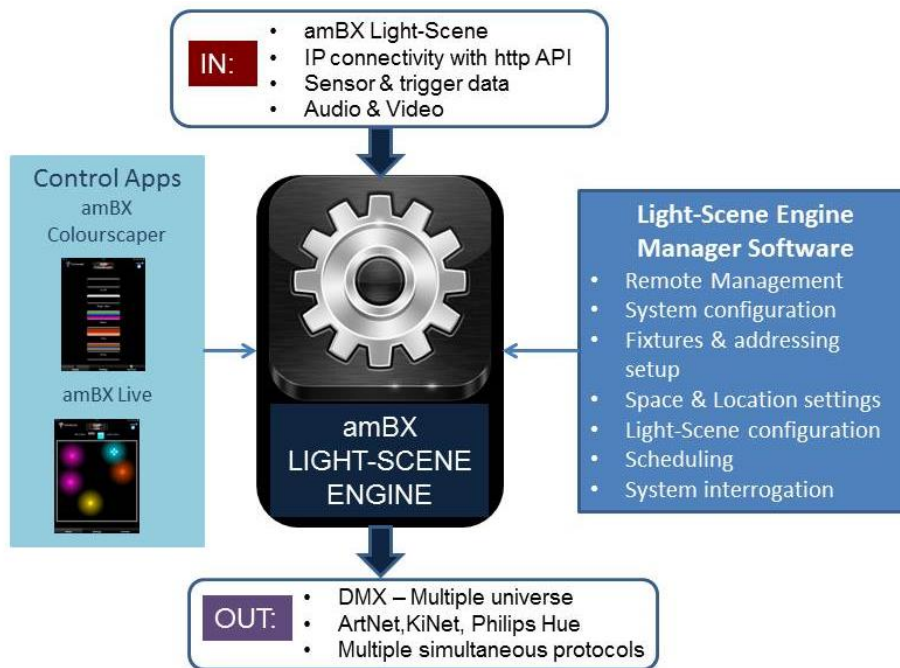
In Entertainment & Leisure

- Unique dynamic lighting for ever-fresh and exciting effects
- Simple Light-Scene selection for the perfect ambience every time
- Immersive and dynamic impact from video for films to adverts

Introducing the new amBX Light-Scene Engine system

THE TECHNOLOGY

The amBX Light-Scene Engine System



Main Features:

- Supports over 250 Light-Scenes
- Multi-room control of up to 32 spaces independently and simultaneously
- Complete interoperability via IP: http API with REST interface
- Dynamic Light-Scene modification on the fly from sensors and triggers
- Dynamic Light-Scene switching on the fly from sensors and triggers
- Up to 128 addressable colour palette entries for each Light-Scene
- Extended device types RGBW, RGBA, Intelligent Whites etc.
- All managed remotely via IP and the Installer Tool Software
- Remote Light-Scene upload, configuration and scheduling
- Apps available (free download): amBX Colourscaper, amBX Live
- Multiple DMX universe support

How to use amBX for your project:

amBX Light-Scene Engine is available in UK and Europe in pre-configured hardware/software solutions from amBX distributor Sun-Light Solutions.

For special projects, commercial lighting applications and solutions or any enquiries outside Europe please contact amBX directly and we will be happy to help you.

BG | AV
BUSINESS GROUP AV DISTRIBUTION

Contact information:

Business Group | AV Distribution, Phone: + 48 22 423 86 86, Email : dystrybcja@business-group.pl

Introducing the new amBX Light-Scene Engine system