

* All images used are for illustrative purposes only.



Download
LG C-Display+
Mobile App
Google Play Store

- www.lg.com/global/business/information-display
- www.youtube.com/c/LGECCommercialDisplay
- www.facebook.com/LGInformationDisplay
- www.linkedin.com/company/lginformationdisplay
- twitter.com/LG_ID_HQ



LG may make changes to specifications and product descriptions without notice.
Copyright © 2022 LG Electronics Inc. All rights reserved. "LG Life's Good" is a registered trademark of LG Corp.
The names of products and brands mentioned here may be the trademarks of their respective owners.

2022 GLOBAL

LG DIGITAL SIGNAGE

Commercial Displays and Solutions



* All images are intended to help you understand, and there may be some differences in practical use.



WELCOME TO OUR SHOPPING MALL

20% OPENING DISCOUNT

FOREST PRINCESS
LG LED Cinema

CINEMA

PREVIOUS SEASON SALE

GIFT TO YOUR GRATEFUL

1 FLOOR GUIDE

- 1F: CLOTHING STORE
- 2F: RESTAURANT
- 3F: BOOKSTORE
- 4F: GYM
- 5F: SPA
- 6F: OFFICE
- 7F: PARKING

BUS

BUS STATION

SPECIAL EVENT SALE

TO SHINE YOUR WRIST


A CAR FOR SPECIAL PERSON LIKE YOU

**Shape Immersive Moments.
Share Innovative Experience.**

Believe your business should be more impactful and iconic. LG Business Solution is here to realize the true potential of your business. Display all your boundless ideas on digital signage and watch the technology of LG Business Solutions shapes them into immersive moments. Make your ideas more outstanding through reality and vividness beyond your imagination and interactivity that allows people to engage. All immersive moments combine to create innovative experience for your business.

CONTENTS

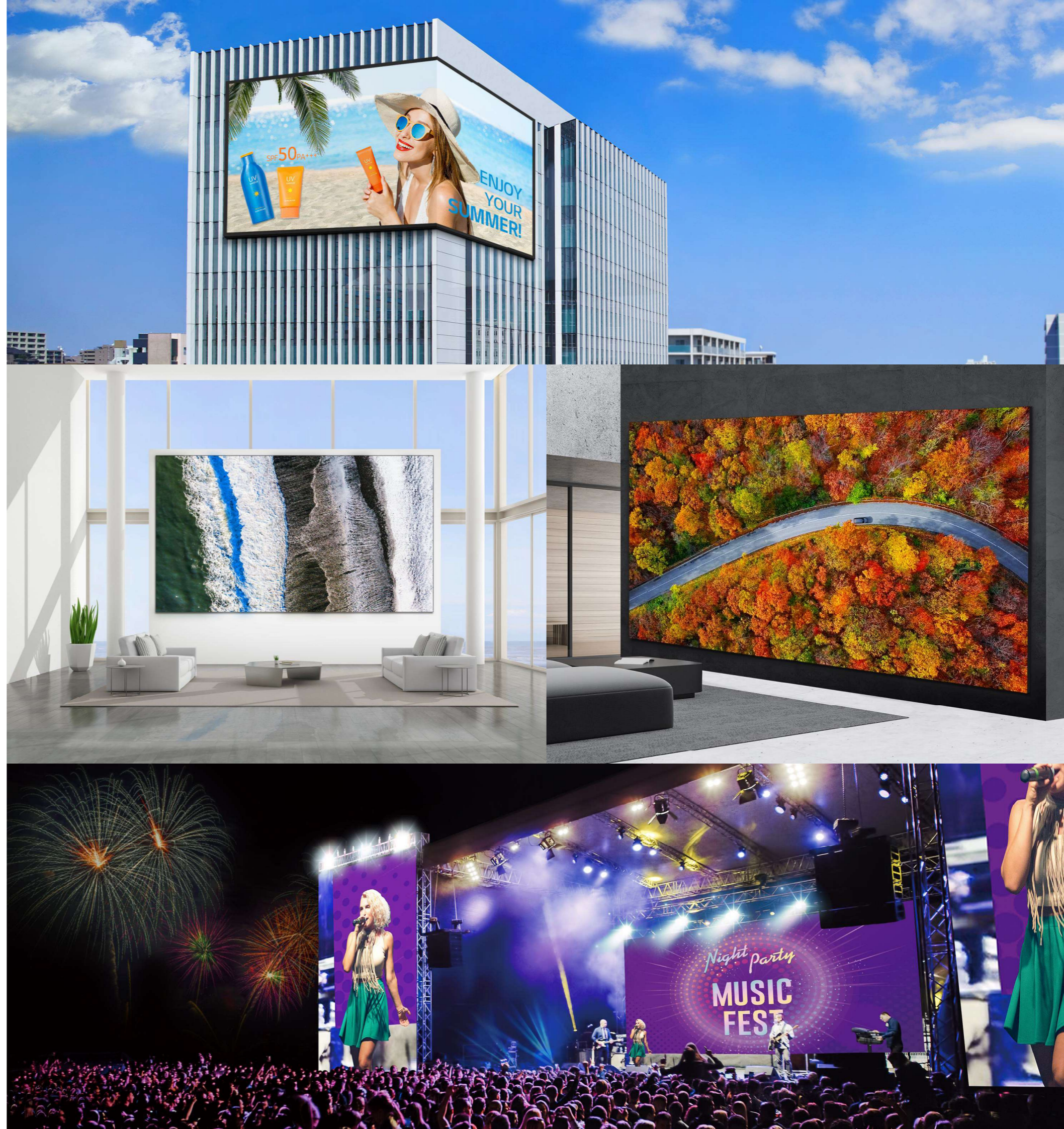
LG Digital Signage Introductions

- LED
 - OLED
 - High Brightness
 - One:Quick
 - Interactive Digital Board
 - Video Wall
 - Stretch
 - UHD
 - FHD
 - webOS Smart Signage Platform
 - SuperSign Solution
 - Extended Care
- 

LED

Various Designs for Customer's Demands,
Offers Great Visual Effects Through High Durability

LG boasts unprecedented visual performance and stability by expanding its industry-leading display technology to LED signage. LG also has a variety of lineups to offer customized solutions in the indoor/outdoor environment.



LED LINE UP

Indoor Ultra Slim Series

LSCB | P1.25 P1.56 P1.88 P2.50



* The image above may differ from the actual appearance.

- Pixel Pitch: 1.25mm
- Brightness: 800cd/m²
- Ultra Slim Depth
- EMC Class B, BS 476 Part7 Class 1

* Based on LSCB012 Specification

Indoor LED LWBC Series

LWBC | P2.60 P2.98 P3.91

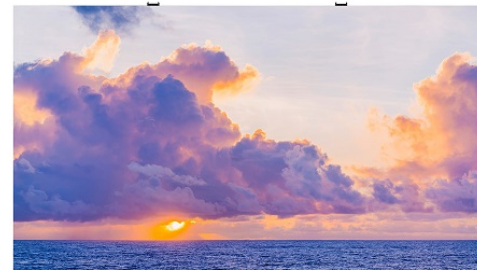


- Pixel Pitch: 2.60 mm
- Brightness: 3,500 nit
- Slim Bezel
- Long-lasting High Performance
- Quick Lock & Flip Design
- Front or Rear Serviceability

* Based on LWBC026 Specification

Indoor LED LSAC Series

LSAC | P2.5



- Pixel Pitch: 2.5mm
- Brightness: 600 cd/m²
- Cable-less Signal Transmission & Power Docking
- Alpha 7 Intelligent Processor
- Real-time ConnectedCare Service

* Based on LSAC025 Specification

Indoor LED LSBB Series

LSBB | P0.94 P1.25 P1.56 P1.88



- Pixel Pitch: 0.94 mm
- Brightness: 600 nit
- Status Indicator of Signal Detection
- Front Serviceability
- Easy-handling Lightweight Cabinet
- Compatibility with LG Software Solutions

* Based on LSBB009 Specification

Indoor LED LFCG Series

LFCG | P3.91



- Pixel Pitch: 3.91 mm
- Brightness: 3,000 nit
- High Durability
- Excellent Usability
- Easy Installation and Maintenance
- Interactive Touch Screen

* Based on LFCG039 Specification

Indoor LED LSBC Series

LSBC | P1.95 P2.60 P2.98 P3.91



- Pixel Pitch: 1.95 mm
- Brightness: 800 nit
- Vivid Color Expression Powered by HDR
- 90° Corner Installation Design Available
- Front or Rear Serviceability
- Compatibility with LG Software Solutions

* Based on LSBC019 Specification

LED LINE UP



Indoor LG MAGNIT Series

LSAB | P0.9 P1.25

- Micro LED Display
- Chip on Board Technology
- Pixel Pitch : 0.9 mm
- Brightness : 1,200 nit (Peak), 600 nit (Max.)
- Contrast Ratio (10 lux) : 150,000 : 1
- Cable-less Signal Transmission & Power Docking

* Based on LSAB009 Specification

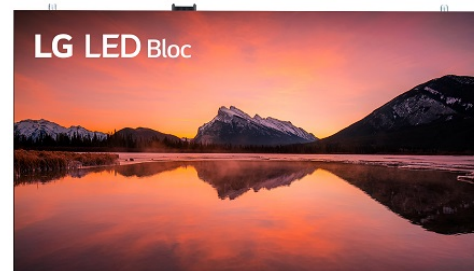


Indoor LG LED Cinema

LADF | P3.3

- Pixel Pitch: 3.3 mm
- Screen Ratio: 4,096 x 2,160 (DCI-compliant)
- Brightness: 48 cd/m² (DCI-compliant / Minimum)
- Contrast Ratio: 4,000 : 1 (Minimum)
- Compatibility with Dolby Media Server (IMS3000) & Dolby Atmos

* Based on LAD033F Specification



Indoor LG LED Bloc Series

LSAA | P1.25

- Pixel Pitch: 1.25mm
- Brightness: 600 cd/m²
- Cable-less Signal Transmission & Power Docking
- AI-powered Image Processor
- Real-time ConnectedCare Service

* Based on LSAA012 Specification

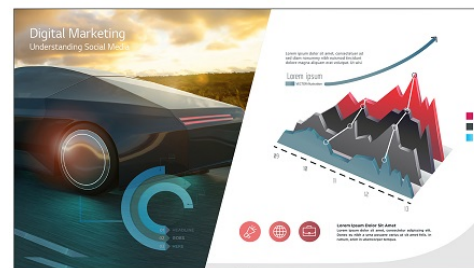


Indoor Transparent LED Film

LAT | P14.00 P24.00

- Pitch : 14mm
- LED Type: R,G,B 3in1 SMD
- Transmittance: 53%
- Curvature(concave and convex): 2,000R
- Self-adhesive Film

* Based on LAT140 Specification



Indoor LG LED All-in-One Series

LAEC (Smart) | 136"

- Pixel Pitch: 1.56 mm
- Screen Size: 136" (Full HD)
- Brightness: 500 nit
- Embedded System Controller
- Built-in Speaker
- Dedicated Accessories : Wall Mount, Motorized Stand (Optional)

Compatible with **LG One:Quick** Share

* Based on LAEC015 Specification



Indoor Real Curve Series

LAPE | P1.5 P2.0 P2.5

- Pixel Pitch: 1.5mm
- Brightness: 1,000 cd/m²
- Modular design
- Curvature(Concave/convex): Up to 1,000R
- High performance system controller
- Front and rear serviceability

* Based on LAP015E Specification

LED LINE UP

Indoor Fine-pitch Series

LAS-F | P0.945 P1.26 P1.454 P1.575 P1.89 P2.52



* The image above may differ from the actual appearance.

- Pixel Pitch: 1.26mm
- Brightness: 600cd/m²
- 16:9 Aspect Ratio
- Lightweight Cabinet Design
- Front Serviceability

* Based on LAS012-F Specification

Indoor Curved Series

LAC | P2.5 P2.97 P3.91



- Pixel Pitch: 2.5mm
- 1,200nit High Brightness
- Design Flexibility
- IP30 Secured Design

* Based on LAC025DD4 Specification

Indoor Compact Series

LSBA | P2.50 P3.90



- Pixel Pitch: 2.5mm
- Brightness: 1,000 cd/m²
- Contrast Ratio: 8,000 : 1
- Easy Installation and Maintenance
- Compatibility with LG Software Solutions

* Based on LSBA025 Specification

Outdoor Premium Series

LBS | P6.00 P8.00 P10.66 P12.00 P16.00



- Pixel Pitch: 6.0mm
- Brightness: 6,000cd/m²
- Outstanding Visibility
- High Refresh Rate of 4,000Hz
- 16-bit Color Processing
- Reliable Weatherproof Design

* Based on LBS060DA4D Specification

Indoor Versatile Series

LSCA | P2.97 P3.91



- Pixel Pitch: 2.97mm
- Brightness: 1,000 cd/m²
- Fast Assembly and Easy Maintenance
- Two Cabinet Options
- 90° Corner Option Available

* Based on LSCA029 Specification

Outdoor Premium Slim Series

LBS-V | P6.25 P8.333 P10.00



- Pixel Pitch: 6.25mm
- Brightness: 6,000cd/m²
- Outstanding Visibility
- 16-bit Color Processing
- Slim and Lightweight Design
- Reliable Weatherproof Design

* Based on LBS062DA4-V Specification

LED LINE UP



Outdoor Essential Series

GSCC | P6.66 P8.00 P16.00

- Pixel Pitch: 6.66mm
- Brightness: 5,000 cd/m²
- Fast Assembly and Easy Maintenance
- IP65 Weatherproof Design
- 90° Corner Option Available

* Based on GSCC066 Specification

Outdoor Stadium Series

LBB | P10.00

- Pixel Pitch: 10.00 mm
- Brightness: 6,000 cd/m²
- Qualified for UEFA Criteria
- Quick Maintenance
- IP65 Weatherproof Design

* Based on LBB100DD3 Specification



Outdoor Versatile Series

GSCA | P3.91 P4.63

- Pixel Pitch: 3.91 mm
- Brightness: 5,000 cd/m²
- Fast Assembly and Easy Maintenance
- Two Cabinet Options
- IP65 Weatherproof Design
- 90° Corner Option Available

* Based on GSCA039 Specification



Outdoor Ultra Light Series

GSCD | P6.94 P10.41

- Pixel Pitch: 6.94mm
- Brightness: 5,000 cd/m²
- Lightweight Design
- IP65 Weatherproof Design
- 90° Corner Option Available

* Based on GSCD069 Specification



1,000x500 (GN2)

OLED

Artistic Space beyond Display

Beyond its informative features, LG OLED signage delivers unsurpassed advertising effectiveness, redesigning space as a prestige-enhancing landmark with perfect colors and innovative forms.

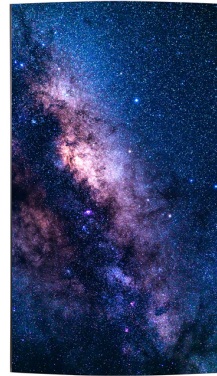


OLED LINE UP

Curvable OLED EF5K-P Series

EF5K-P | 55"

- Brightness: 150/400nit (APL 100%/25%)
- Depth: 12.4 mm (Head Only)
- Curvature: ~1,000R(Concave/Convex)
- Interface: HDMI, DP, USB(2), Audio, RS232C, RJ45, IR



* Based on 55EF5K-P Specification

Transparent OLED EW5TK-A Series

EW5TK-A | 55"

- Brightness(Typ.) : 150 / 400 nit (APL 100% / 25%, Without Glass)
- Bezel : 7.9 mm (T/B/L), 144.5 mm (B)

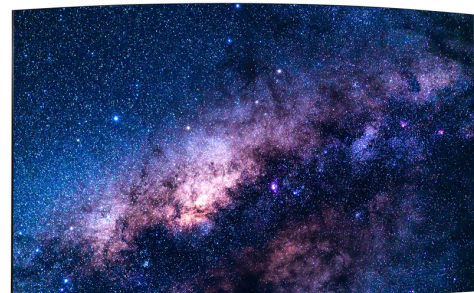


* Based on 55EW5TK-A Specification

Curvable OLED EF5K-L Series

EF5K-L | 55"

- Brightness: 150/400nit (APL 100%/25%)
- Depth: 12.4 mm (Head Only)
- Curvature: ~1,000R(Concave/Convex)
- Interface: HDMI, DP, USB(2), Audio, RS232C, RJ45, IR



* Based on 55EF5K-L Specification

Transparent OLED 55EW5PG-S Series

EW5PG-S | 55"

- Brightness(Typ.) : 400nit (APL 25%, Without Glass)
- Transparency(Typ.) : 38%
- Standalone Design



* Based on 55EW5PG-S Specification

Flat OLED EJ5K Series

EJ5K | 55"

- Brightness(Typ.): 150/400 nit (APL 100% / 25%)
- Bezel : 5.3 mm (T/B/L), 11.0 mm (B)
- Interface : HDMI/DP/USB(2)/ RS232C/ RJ45/ Audio/ IR



* Based on 55EJ5K Specification

OLED Pro Monitor EP5G Series

EP5G | 65"

- Accurate Color with a Wide OLED Screen
- Jack Interfaces for Professional (SDI, SFP+, etc.)
- Smart Calibration
- Brightness(Typ.) : 950 / 850 / 450 / 175 @D65 (APL 3% / 10% / 25% / 100%)



* Based on 65EP5G Specification

OLED LINE UP

**Transparent OLED EW5G-V Series**

EW5G-V | 55"

- Brightness(Typ.): 400nit (APL 25%, Without Glass)
- Transparency(Typ.) : 38%
- Bezel : 7.9 mm (T/B/L), 121.7 mm (B)
- Interface : HDMI/DP/USB(2)/ RS232C/ RJ45/ Audio/ IR

* Based on 55EW5G-V Specification

Curvable OLED EF5G-L Series

EF5G-L | 55"

- Brightness: 150/400nit (APL 100%/25%)
- Depth: 12.4 mm (Head Only)
- Curvature: ~1,000R(Concave/convex)
- Interface: HDMI, DP, USB(2), Audio, RS232C, RJ45, IR

* Based on 55EF5G-L Specification

**Flat OLED EJ5G Series**

EJ5G | 55"

- Brightness(Typ.): 400 cd/m² (APL 25%)
- Bezel: 0.9 mm (Even, Off bezel)
- Depth: 4.9mm (Head)
- Interface: HDMI/ USB 2.0(2)/ DP/ Audio Out/ RS232C/ RJ45/ IR

* Based on 55EJ5G Specification

**Curvable OLED EF5G-P Series**

EF5G-P | 55"

- Brightness: 150/400nit (APL 100%/25%)
- Depth: 12.4 mm (Head Only)
- Curvature: ~1,000R(Concave/convex)
- Interface: HDMI, DP, USB(2), Audio, RS232C, RJ45, IR

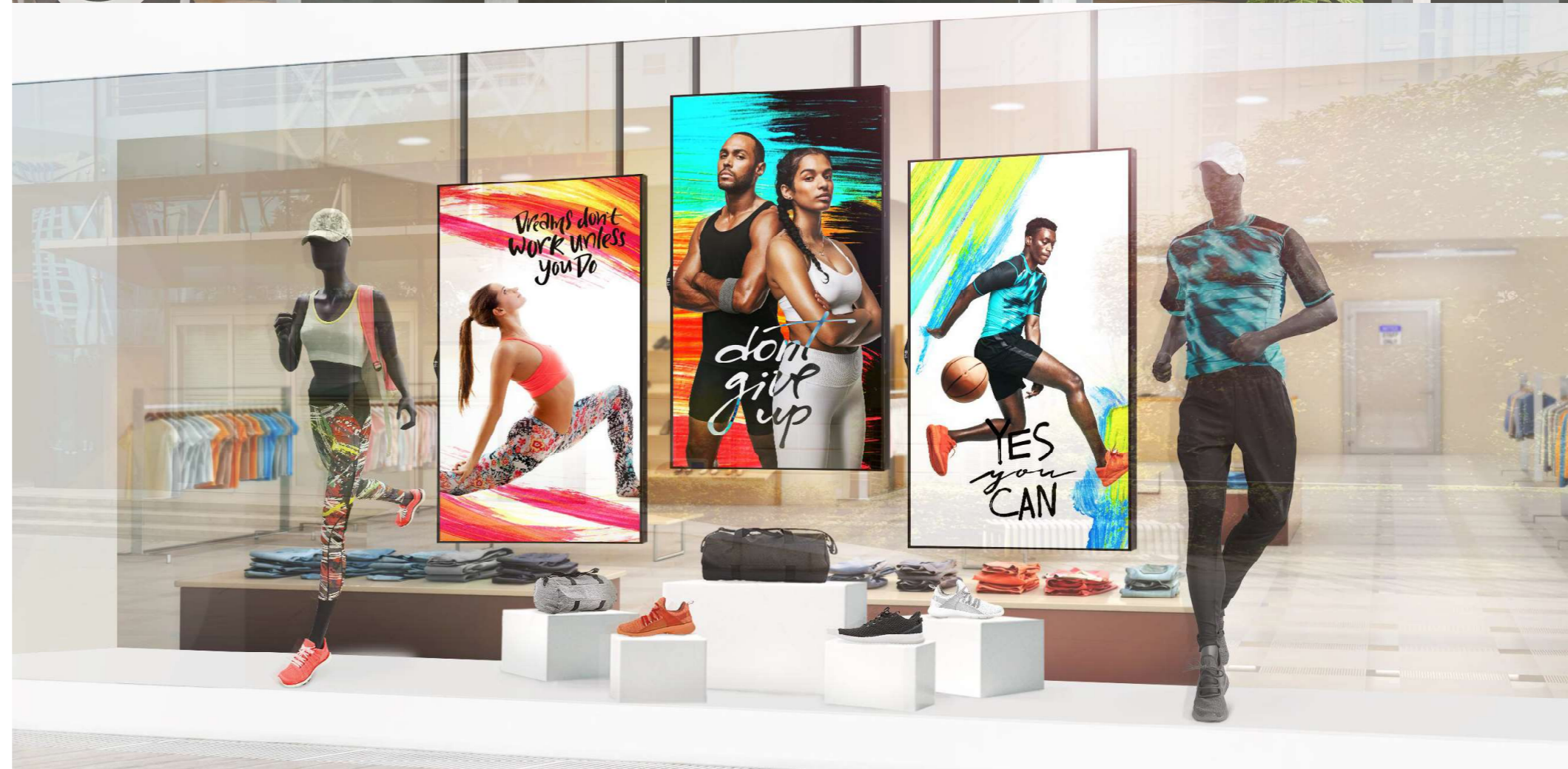
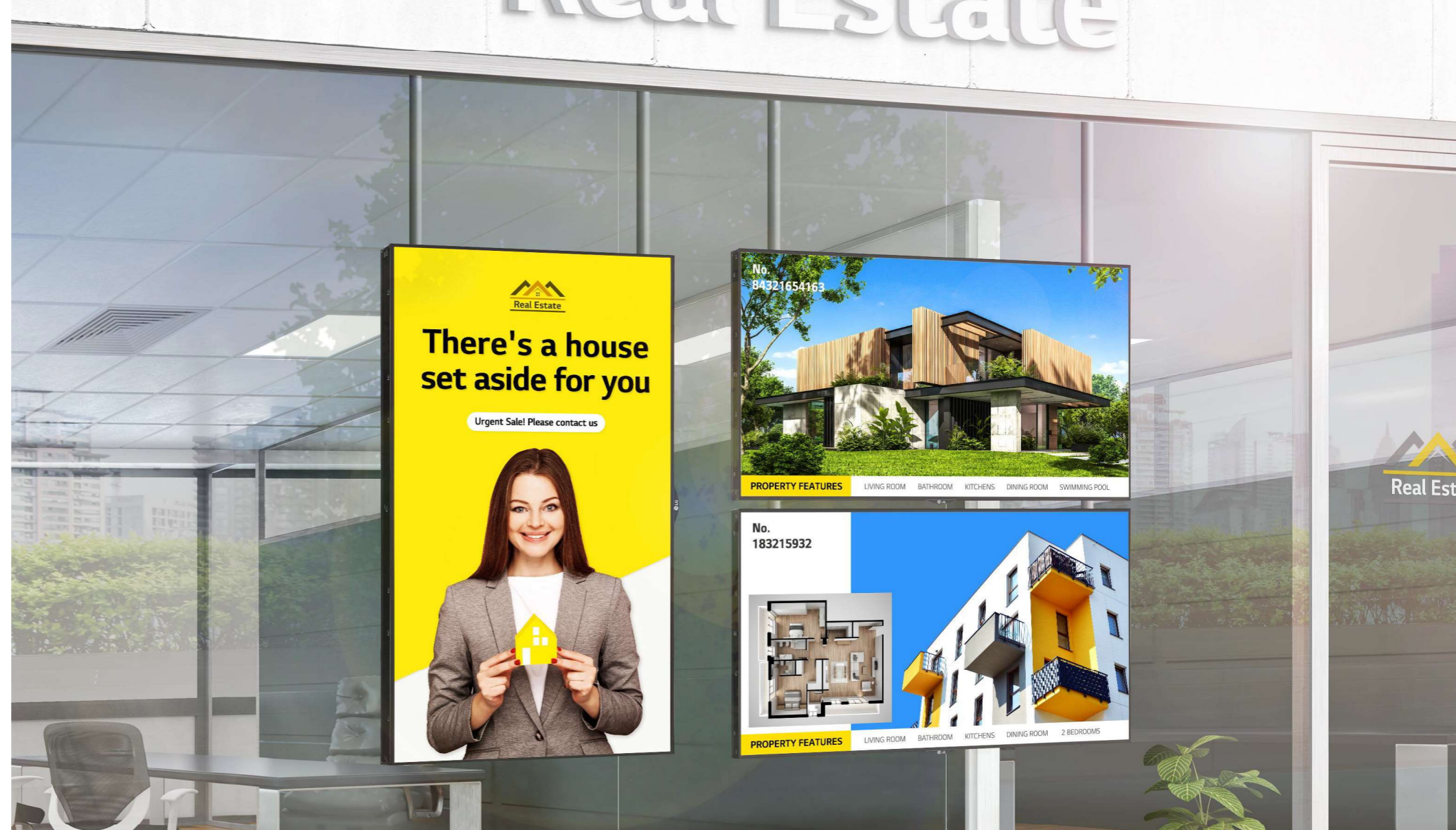
* Based on 55EF5G-P Specification



HIGH BRIGHTNESS

Outstanding Visibility with Reliable Performance

With superior picture quality and excellent durability, the display's eye-catching content will captivate customers even under direct sunlight or extreme environmental fluctuations.



HIGH BRIGHTNESS LINE UP

High Brightness XE1J-B Series

XE1J-B | 22"



- Brightness (Typ, w/ Glass) : 1,500 nits
- IP56 Rated Dust / Water Proof
- 21.5" of Versatile Display Size
- Wide Operating Temperature Range
- webOS Smart Platform
- Web-based Monitoring Solution

* Based on 22XE1J-B Specification

High Brightness XE4F-M Series

XE4F-M | 55" 49"



- Brightness(Typ.) : 4,000 cd/m²
- Bezel : 38.4 mm (T/B), 26.0 mm (L/R)
- Interface : HDMI/ DP/HDBaseT/USB/ Audio/ RS232C/ RJ45
- Anti-Reflection Coating
- IP56 Design, IK10 Protective Glass

* Based on 55XE4F-M Specification

High Brightness XS4J-B Series

XS4J-B | 55" 49"



- Brightness : 4,000 nits (Typ.) / 3,200 nits (Min.)
- Resolution : Full HD (1,920 x 1,080)
- Bezel (T,B / R,L) : 12.0 / 9.9 mm
- webOS-based High Performance
- Built-in Wi-Fi
- Web-based Monitoring Solution

* Based on 55XS4J-B Specification

High Brightness XE3FS-B Series

XE3FS-B | 86"



- Brightness(Typ.) : 3,000 cd/m²
- Bezel : 101 mm (T/B), 135 mm (L/R)
- Interface : HDMI/ DP/ DVI-D/ USB/ Audio/ RS232C/ RJ45/ External IR
- Anti-Reflection Coating
- IP56 Design, Protective Glass

* Based on 86XE3FS-B Specification

High Brightness XS4G Series

XS4G | 75"



- Brightness : 4,000 nits (Typ.) / 3,200 nits (Min.)
- Resolution : ULTRA HD (3,840 x 2,160)
- Bezel : 13.8 mm (Even Bezel)
- Double-sided Usage with Dedicated Bracket
- Built-in Wi-Fi & Bluetooth
- Web-based Monitoring Solution

* Based on 75XS4G Specification

High Brightness XF3ES-B Series

XF3ES-B | 75"



- Brightness : 3,000 cd/m² (Typ.)
- Life Time : 50,000 hours
- Bezel : 11.8 mm (Even bezel)
- Depth : 128.9 mm
- Interface : HDMI (2)/ DP/ DVI-D/ USB/ RJ45/ RS232C/ IR/ External speaker out

* Based on 75XF3ES-B Specification

HIGH BRIGHTNESS LINE UP

High Brightness XS2E Series

XS2E | 75" 55" 49"



- Brightness : 2,500 cd/m² (Typ.)
- Life Time : 50,000 hours
- Bezel Width: 11.8 mm(Even, Off-Bezel)
- Depth : 116mm
- Interface: HDMI(2)/ DP/ DVI-D/ RJ45/ USB/ SD Card/ IR/ RS232C/ External Speaker Out

* Based on 75XS2E Specification

High Brightness XF3C-B Series

XF3C-B | 75"



- Brightness : 3,000 cd/m² (Typ.)
- Life Time : 50,000 hours
- Bezel : 12.8 mm(Even bezel)
- Depth : 123.9 mm
- Interface : HDMI (2) / DP / DVI / RJ45 / IR / RS232C / USB / SD Card / External speaker out (L/R)

* Based on 75XF3C-B Specification

High Brightness XF3E-B Series

XF3E-B | 55" 49"



- Brightness : 3,000 cd/m² (Typ.)
- Life Time : 50,000 hours
- Bezel : 9.9 mm (L/R), 12 mm (T/B)
- Depth : 106.8mm
- Interface: HDMI(2) / DP / DVI-D / RJ45 / RS232C / USB / External speaker out (L/R)

* Based on 55XF3E-B Specification

High Brightness XE3C Series

XE3C | 75"



- Brightness(Typ.) : 3,000 cd/m²
- Operating Temperature : -30°C to 50 °C
- IP56 Design
- Interface : HDMI / DP / DVI / RJ45 / RS232C / SD Card / USB3.0 / External speaker out

* Based on 75XE3C Specification

LG One:Quick Series

What a One:derful Life

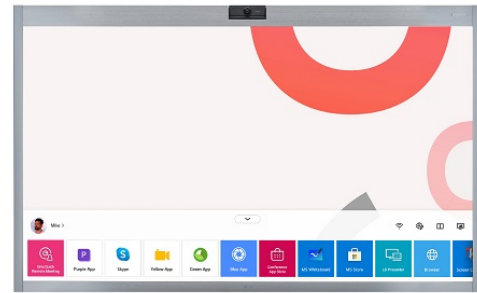
- One:Quick Works
- One:Quick Flex
- One:Quick Share



ONE:QUICK LINE UP

One:Quick Works Series

CT5WJ | 55"



* Screen images simulated.

- Resolution : 4K Ultra HD (3,840 x 2,160)
- Brightness : 450 nit
- Built-in 4K Camera & Microphone
- Sound (10W + 10W)
- In-Cell Touch (Max. 10 Points)
- Windows 10 IoT Enterprise (Value)

* Based on 55CT5WJ Specification

One:Quick Flex Series

HT3WJ | 43"



* Screen images simulated.
* Stands are sold separately.

- Resolution : 4K Ultra HD (3,840 x 2,160)
- Brightness : 350 nit
- Camera : 2K Full HD (1,920 x 1,080), 88° FoV
- Sound : 2.0 Channel (10W + 10W)
- Microphone : 3m Pickup Range
- Windows 10 IoT Enterprise (Basic)

* Based on 43HT3WJ Specification

One:Quick Share Series

SC-00DA |



LG One:Quick Share

- Embedded OS : Linux
- Wi-Fi : IEEE 802.11 a/b/g/n/ac
- Connectivity : USB 2.0 Type A (1)
- Work together with LG One:Quick Share Application and Compatible LG digital signage models

* Based on SC-00DA Specification

INTERACTIVE DIGITAL BOARD

Smart Collaboration beyond Touch Experience

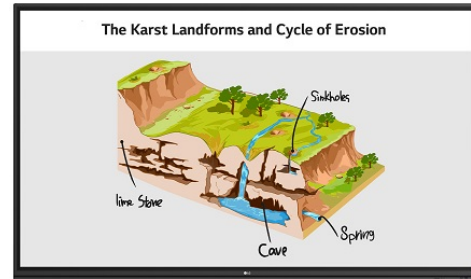
The LG Interactive Digital Board (IDB) boosts meeting productivity by encouraging participants to freely share their ideas on the screen using intuitive touch and embedded collaboration solutions.



INTERACTIVE DIGITAL BOARD LINE UP

Interactive Digital Board TR3PJ Series

TR3PJ | 86" 75" 65"

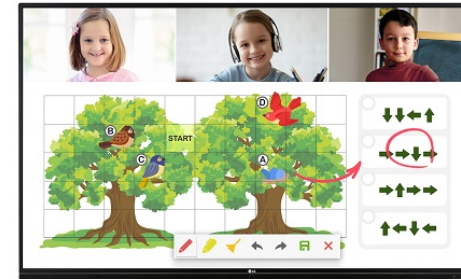


- Brightness : 390 nit (w/o Glass, Typ.)
- Multi Touch Point : 20 Points (Max.)
- Interface : HDMI (3), RGB (1), Audio In (1), RS-232C In (1), RJ45 (1), USB 3.0 Type A (3), USB 2.0 Type A (1), USB 3.1 Type C (1), Audio Out / Optical Output, Touch USB (2)

* Based on 86TR3PJ Specification

Interactive Digital Board TR3DJ Series

TR3DJ | 86" 75" 65"



- Brightness : 390 nit (w/o Glass, Typ.)
- Multi Touch Point : 20 Points (Max.)
- Interface : HDMI (3), RGB (1), Audio In (1), RS-232C In (1), RJ45 (1), USB 3.0 Type A (3), USB 2.0 Type A (3), Audio Out / Optical Output, Touch USB (2)

* Based on 86TR3DJ Specification

Interactive Digital Board TC3CG-H Series

TC3CG-H | 55"

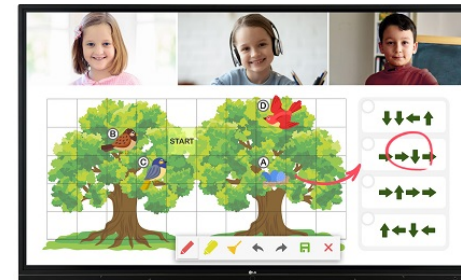


- Brightness : 350nit (w Glass, typ)
- Multi Touch Point : 40 Points (Max.)
- Interface (Input) : HDMI (2, HDCP 2.2/1.4), DP (1, HDCP2.2/1.3), RS-232C In, RJ45 (LAN), IR In, USB2.0 Type A (2)
- Interface (Output) : DP Out (1, Input HDMI1/2/DP/OPS), Audio Out, External Speaker Out (6 ohm), Touch USB (USB 2.0 Type B), RS-232C Out

* Based on 55TC3CG-H Specification

Interactive Digital Board TR3BG-BX Series

TR3BG-BX | 55"

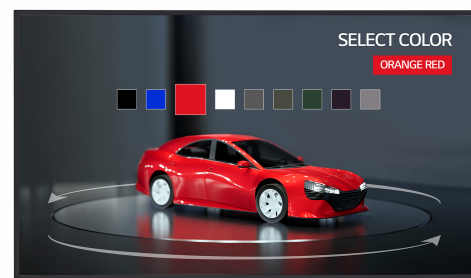


- Brightness : 311 nit (w/o Glass, Typ.)
- Touch Type : IR
- Multi Touch Point : Max. 20 Points
- Interface : HDMI (3), HDCP2.2/1.4, RGB, Audio In, RS232C In, RJ45(LAN), USB3.0 Type A (3), USB2.0 Type A (3), HDMI Out (1), Audio Out / Optical Output, Touch USB (2)

* Based on 55TR3BG-BX Specification

Interactive Digital Board TNF5J Series

TNF5J | 55" 43" 32"



- Brightness : 450 nit
- Multi Touch Point : 10 Points (Max.)
- Interface : HDMI (2, HDCP 2.2/1.4), RS-232C In, RJ45(LAN), IR In, USB2.0 Type A, Audio Out, Touch USB (USB 2.0 Type B)

* Based on 55TNF5J Specification

Interactive Digital Board TR3BF-B Series

TR3BF-B | 86" 75" 65"



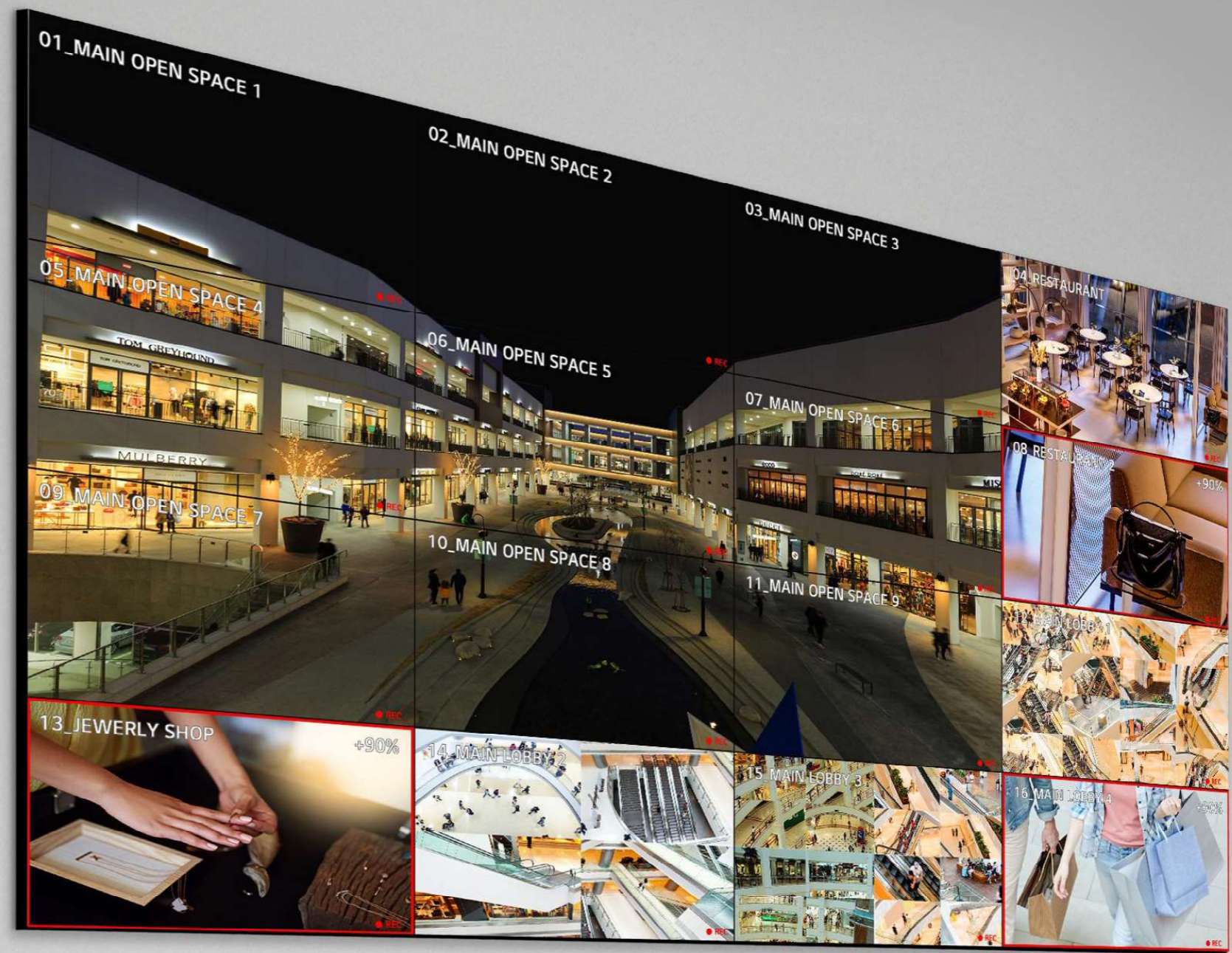
- Brightness (w/ Glass) : 330 nit (Typ.)
- Touch Type : IR
- Multi Touch Point : Max 20 Points
- Interface : HDMI (3), RGB / Audio In, RS232C In, USB 2.0 (3, Front : 2ea, Bottom side: 1ea Only for software update), USB 3.0 (3), Touch Out(USB2.0, B Type) (2), HDMI (1), Optical Output / Audio Out

* Based on 86TR3BF-B Specification

VIDEO WALL

Artistic Immersion, Overwhelming Captivation

Seamlessly assembled on a large video wall screen, the impressive immersion generated by LG's extremely narrow bezel provides an extraordinary viewing experience.



VIDEO WALL LINE UP

Video Wall VL5PJ Series

VL5PJ | 55" 49"



- Brightness(Typ.) : 500 nit
- Bezel : 2.25 mm (T/L), 1.25 mm (B/R)
- Depth : 93.1 mm
- Interface : HDMI/ DP/ DVI-D/ USB/ RS232C/ RJ45/ Audio/ IR

* Based on 55VL5PJ Specification

Video Wall VL5G-M Series

VL5G-M | 49"

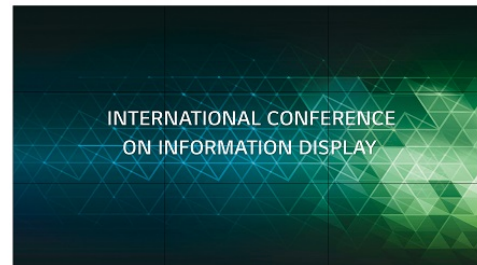


- Brightness(Typ.) : 500 cd/m²
- Bezel : 2.25 mm (T/L), 1.25 mm (B/R)
- Depth : 89.7 mm
- Interface : HDMI/ DP/ DVI-D/ USB/ RS232C/ RJ45/ Audio/ IR

* Based on 49VL5G-M Specification

Video Wall VH7J-H Series

VH7J-H | 55"

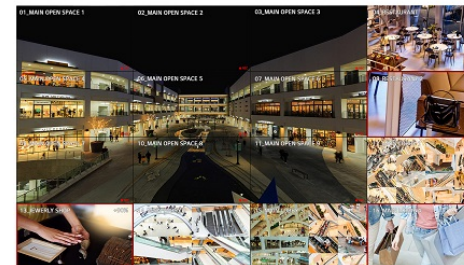


- Brightness(Typ.) : 700 nit
- Bezel : 1.74mm (Panel Bezel to Panel Bezel), 1.3mm (T/L), 0.44mm (B/R)
- Depth : 86.9 mm
- Interface : HDMI/ DP/ DVI-D/ USB/ RS232C/ RJ45/ Audio/ IR

* Based on 55VH7J-H Specification

Video Wall VSH7J Series

VSH7J | 55"



- Brightness(Typ.) : 700 cd/m²
- Bezel : 0.44 mm (Even)
- Depth : 86.5 mm
- Interface : HDMI(2)/ DP/ DVI-D/ USB/ RS232C/ RJ45/ Audio/ IR
- Smart Calibration

* Based on 55VSH7J Specification

Video Wall VM5J-H Series

VM5J-H | 55"



- Brightness(Typ.) : 500 nit
- Bezel : 1.74mm (Panel Bezel to Panel Bezel), 1.3mm (T/L), 0.44mm (B/R)
- Depth : 86.9 mm
- Interface : HDMI/ DP/ DVI-D/ USB/ RS232C/ RJ45/ Audio/ IR

* Based on 55VM5J-H Specification

Video Wall VSM5J Series

VSM5J | 55"



- Brightness(Typ.) : 500 cd/m²
- Bezel : 0.44 mm (Even)
- Depth : 86.5 mm
- Interface : HDMI(2)/ DP/ DVI-D/ USB/ RS232C/ RJ45/ Audio/ IR
- Smart Calibration

* Based on 55VSM5J Specification

VIDEO WALL LINE UP

Video Wall VL5G Series

VL5G | 49"

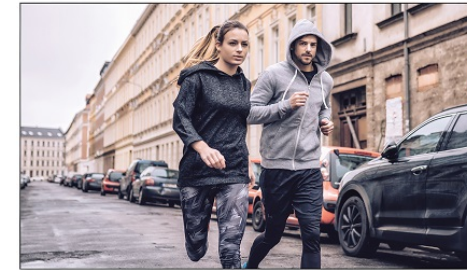


- Brightness(Typ.) : 500 cd/m²
- Bezel : 2.25 mm (T/L), 1.25 mm (B/R)
- Depth : 89.7 mm
- Interface : HDMI/ DP/ DVI-D/ USB/ RS232C/ RJ45/ Audio/ IR

* Based on 49VL5G Specification

Video Wall VL5F-A Series

VL5F-A | 55" 49"



- Brightness(Typ.) : 500 cd/m²
- Bezel : 2.25 mm (T/L), 1.25 mm (B/R)
- Depth : 93.1 mm
- Interface : HDMI (2)/ DP/ DVI-D/ USB/ RS232C/ RJ45/ Audio/ IR

* Based on 55VL5F-A Specification

Video Wall VL5PF Series

VL5PF | 49"

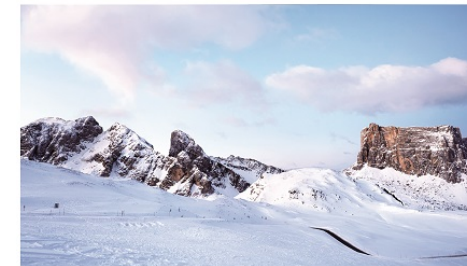


- Bezel: 2.25 mm (Left/Top) / 1.25 mm (Right/Bottom)
- Depth : 89.7mm
- Interface : RGB, HDMI, DVI-D, DP in/out, USB 3.0, IR, Audio in/out, RS232C in/out, RJ45 in/out
- webOS 3.0+

* Based on 49VL5PF Specification

Video Wall SVH7PF-H Series

SVH7PF-H | 55"



- Brightness(Typ.) : 700 cd/m²
- Power Type : External Power Box
- Bezel : 0.44 mm(Even)
- Surface Treatment(28%)
- Interface : HDMI(2)/ DP/ DVI-D/ USB/ RS232C/ RJ45/ Audio/ IR
- Smart Calibration

* Based on 55SVH7PF-H Specification

Video Wall SVM5F-H Series

SVM5F-H | 55"



- Brightness(Typ.) : 500 cd/m²
- Bezel : 0.44 mm (Even)
- Depth : 86.5 mm
- Surface Treatment: Haze 28%
- Interface : HDMI(2)/ DP/ DVI-D/ USB 2.0/ RS232C/ RJ45/ Audio/ IR
- Smart Calibration

* Based on 55SVM5F-H Specification

Video Wall VL7F-A Series

VL7F-A | 55" 49"



- Brightness(Typ.) : 700 cd/m²
- Bezel : 2.25 mm (T/L), 1.25 mm (B/R)
- Depth : 93.1 mm
- Interface : HDMI (2)/ DP/ DVI-D/ USB/ RS232C/ RJ45/ Audio/ IR

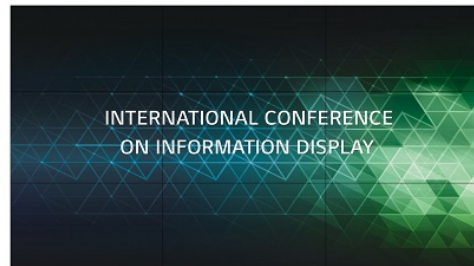
* Based on 55VL7F-A Specification

VIDEO WALL LINE UP

**Video Wall SVH7F-A Series****SVH7F-A** | 55"

- Brightness(Typ.) : 700 cd/m²
- Bezel : 0.44 mm (Even)
- Depth : 86.5 mm
- Interface : HDMI(2)/ DP/ DVI-D/ USB/ RS232C/ RJ45/ Audio/ IR
- Smart Calibration

* Based on 55SVH7F-A Specification

**Video Wall VH7E-H Series****VH7E-H** | 55"

- Brightness(Typ.) : 700 cd/m²
- Surface Treatment(Haze): 44%
- Bezel : 0.9 mm (Even)
- Depth : 86.5 mm
- Interface : HDMI(2)/ DP/ DVI-D/ USB 2.0/ RS232C/ RJ45/ Audio/ IR

* Based on 55VH7E-H Specification

**Video Wall VM5E-A Series****VM5E-A** | 55" 49"

- Brightness(Typ.) : 500 cd/m²
- Bezel : 0.9 mm (Even)
- Depth : 86.5 mm
- Interface : HDMI(2)/ DP/ DVI-D/ USB 2.0/ RS232C/ RJ45/ Audio/ IR

* Based on 55VM5E-A Specification

STRETCH

Space Fitting Design for Effective Advertising

The unique bar-type displays are ideal for showing vertical or horizontal objects without truncation or compound content composed of video and text. Placed on pillars or any long structures, they provide an extraordinary viewing experience.



STRETCH LINE UP

**Stretch BH7G Series****BH7G** | 88"

- Brightness(Typ.) : 700 cd/m²
- Aspect Ratio: 32:9
- Bezel: 4.4 mm(L/R), 5.9 mm(T/B)
- Depth: 84.8 mm
- Interface: HDMI (3), DP, USB(2), Audio, DVI-D, RS232C, RJ45, IR

* Based on 88BH7G Specification

**Stretch BH5F-M Series****BH5F-M** | 86"

- Brightness(Typ.) : 500 cd/m²
- Aspect Ratio: 58:9
- Bezel: 4.4 mm(L/R), 5.9 mm(T/B)
- Depth: 81.7mm
- Interface: HDMI (3), DP, USB(2), Audio, DVI-D, RS232C, RJ45, IR

* Based on 86BH5F-M Specification

UHD

Absolute Color Vividness on Ultra HD Display

Vibrant colors and powerful performance bring content to life, effectively capturing the attention of passersby, driving traffic to the display's location.



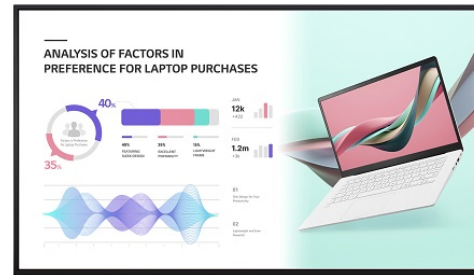
DEPARTURES				
CITY	TIME	FLIGHT	GATE	REMARKS
Anchorage	8:00pm		50	On Time
Austin	10:00pm		56B	On Time
Boston	11:40am		57	On Time
Chicago/O'Hare	10:10am		53	Now
Chicago/O'Hare	11:50am		58A	Now
Chicago/O'Hare	12:15pm		56B	On Time
Chicago/O'Hare	2:15pm			On Time
Chicago/O'Hare	3:40pm		57	On Time
Chicago/O'Hare	5:20pm		58B	On Time
Chicago/O'Hare	9:50am		56B	On Time
Chicago/O'Hare	11:40am		58A	On Time
Dallas/Ft. Worth	12:50pm		58B	On Time
Dallas/Ft. Worth	1:10pm		58A	On Time
Dallas/Ft. Worth	1:15pm		53	On Time
Dallas/Ft. Worth	2:35pm			On Time
Dallas/Ft. Worth	3:25pm			On Time
Dallas/Ft. Worth	4:55pm			On Time
Dallas/Ft. Worth	6:00pm			On Time
Las Vegas	12:05pm			On Time
Las Vegas	1:35pm			On Time
Las Vegas	2:40pm			On Time
Las Vegas	4:55pm			On Time
Las Vegas	6:10pm			On Time
Las Vegas	8:05pm			On Time



UHD LINE UP

Standard UH5J-H Series

UH5J-H | 65" 55" 49" 43"

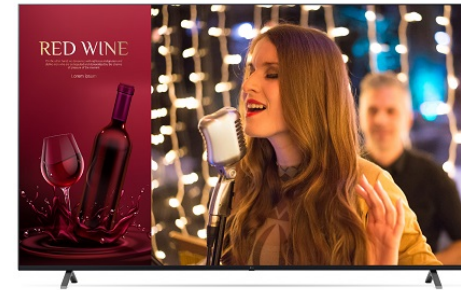


- Brightness(Typ.) : 500 nit
- Surface Treatment (Haze) : 28%
- Bezel : 9.9 mm (T/R/L), 14.4 mm (B)
- Depth : 39.9 mm
- Interface : HDMI(3)/ DP/ DVI-D/ USB 2.0/ RS232C/ RJ45/ Audio/ IR
- Built-in Speaker

* Based on 65UH5J-H Specification

Standard UR640S(NA) Series

UR640S (NA) | 86" 75" 65" 55" 50" 43"



- Brightness(Typ.) : 330 nits
- Resolution : ULTRA HD (3,840 x 2,160)
- Improved Design with Slim Depth
- webOS-based High Performance
- Easy Content Management/Group Management
- SuperSign Control / CMS Compatibility

* Based on 86UR640S (NA) Specification

Standard UH7J-H Series

UH7J-H | 65" 55" 49" 43"



- Brightness(Typ.) : 700 nit
- Surface Treatment (Haze) : 28%
- Bezel : 9.9 mm (T/R/L), 14.4 mm (B)
- Depth : 39.9 mm
- Interface : HDMI(2)/ DP/ DVI-D/ USB 2.0(2)/ RS232C/ RJ45/ Audio/ IR
- Built-in Speaker

* Based on 65UH7J-H Specification

Standard UL3J-B Series

UL3J-B | 86" 75" 65" 55" 50" 43"



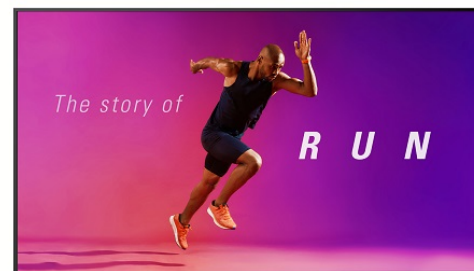
Compatible with **LG One:Quick** Share

- Brightness(Typ.) : 330 nits
- Resolution : ULTRA HD (3,840 x 2,160)
- webOS-based High Performance
- Built-in Speaker
- Compatible with LG's One:Quick Share
- Compatible with AV Control Systems

* Based on 86UL3J-B Specification

Standard UM5J Series

UM5J | 98" 110"



- Brightness : 500 nit (Typ.), 400 nit (Min.)
- Resolution : ULTRA HD (3,840 x 2,160)
- Built-in Wi-Fi / Bluetooth
- Built-in Speaker (10 W + 10 W)

* Based on 110UM5J Specification

Standard UL3J-E Series

UL3J-E | 75" 65" 55" 50" 43"



Compatible with **LG One:Quick** Share

- Brightness(Typ.) : 330 nits
- Resolution : ULTRA HD (3,840 x 2,160)
- webOS-based High Performance
- Built-in Speaker
- Compatible with LG's One:Quick Share
- Compatible with AV Control Systems

* Based on 75UL3J-E Specification

UHD LINE UP

Standard UH7F-H Series

UH7F-H | 55" 49"



- Brightness(Typ.) : 700 cd/m²
- Surface Treatment (Haze) : 28%
- Bezel : 9.9 mm (T/R/L), 14.4 mm (B)
- Depth : 39.9 mm
- Interface : HDMI(3)/ DP/ DVI-D/ USB 2.0(2)/ RS232C/ RJ45/ Audio/ IR
- Built-in Speaker

* Based on 55UH7F-H Specification

Standard UH5F-H Series

UH5F-H | 98" 86" 75" 65" 55" 49" 43"



- Brightness(Typ.) : 500 cd/m²
- Surface Treatment (Haze) : 28%
- Bezel : 14.9 mm (Even)
- Depth : 83.8 mm (without Handle)
- Interface : HDMI(3)/ DP/ DVI-D/ USB 2.0(2)/ RS232C/ RJ45/ Audio/ IR
- Built-in Speaker and Detachable Logo

* Based on 98UH5F-H Specification

Standard UM3DG-H Series

UM3DG-H | 98" 86" 75"

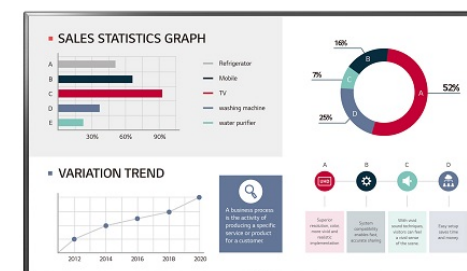


- Brightness(Typ.) : 350 cd/m²
- Surface Treatment (Haze) : 28%
- Bezel : 14.9 mm (Even Bezel)
- Depth : 83.8 mm (without Handle)
- Interface : HDMI(3)/ USB 2.0/ RS232C/ RJ45/ Audio Out / IR In
- Built-in Speaker

* Based on 98UM3DG-H Specification

Standard UL3G-B Series

UL3G-B | 86" 75" 65" 55" 50" 43"



- Brightness(Typ.) : 350 cd/m²
- Bezel : 21.9 mm (Even)
- Depth : 93.3 mm
- Interface : HDMI(3), USB 2.0(2), RS232C In/Out, RJ45 In, IR In, Audio Out
- Built-in Speaker
- Compatible with One:Quick Share

* Based on 86UL3G-B Specification

Standard UM3DG-B Series

UM3DG-B | 65" 55" 49" 43"



- Brightness(Typ.) : 350 cd/m²
- Bezel : 9.9 mm (T/R/L), 14.4 mm (B)
- Depth : 39.9 mm
- Interface : HDMI(3), USB 2.0, Audio Out, RS232C In/Out, RJ45 In, IR In
- Built-in Speaker
- Compatible with One:Quick Share

Compatible with **LG One:Quick** Share

* Based on 65UM3DG-B Specification

Standard UT640S(NA) Series

UT640S (NA) | 86" 75" 65" 55" 49" 43"



- Content Management/Group Management
- SuperSign Control
- SNMP
- Wake-up On Lan
- Crestron Connected® (Network Based Control)

* Based on 86UT640S (NA) Specification

FHD

A Broad Range of Offers for Diverse Customer Values

Easily installed in any venues, LG digital signage plays an integral role in customer engagement and spatial enhancement.



FHD LINE UP

Standard SM5J-B Series**SM5J-B** | 32"

- Brightness(Typ.) : 400 cd/m²
- Bezel : 13 mm (T/R/L), 18 mm (B)
- Depth : 55.5 mm
- Interface : HDMI(3) / USB 2.0/ RS232C/ RJ45/ IR / Audio Out
- Built-in Speaker : 10W + 10W

* Based on 32SM5J-B Specification

Standard SM5KE-B Series**SM5KE-B** | 43"

- Brightness(Typ.) : 450 cd/m²
- Bezel : 11.9 mm (T/R/L), 18 mm (B)
- Depth : 54 mm
- Interface : HDMI(3)/ DP/ DVI-D/ USB 3.0/ RS232C/ RJ45/ Audio/ IR
- Built-in Speaker : 10W + 10W

* Based on 43SM5KE-B Specification

Standard SM3G-B Series**SM3G-B** | 22"

- Brightness(Typ.) : 250 cd/m²
- Bezel : 16.3mm
- Depth : 53.8mm
- Interface : HDMI(2) / USB 2.0 / RS232C / RJ45 / IR / Audio
- USB Plug & Play, Built-in Wi-Fi

* Based on 22SM3G-B Specification

Standard SL5B-B Series**SL5B-B** | 43"

- Brightness : 450 cd/m²
- Bezel : Top/Left/Right 11.9mm, Bottom 18mm
- Depth : 38.6mm
- Interface : HDMI/DVI/RGB/RJ45/2USB, RS232C
- 18/7 Operation

* Based on 43SL5B-B Specification

Standard LT340C(NA) Series**LT340C (NA)** | 49" 43" 32"

- Public Display Mode
- USB Cloning
- WOL (Wake on LAN)
- Crestron Connected® (Network Based Control)

* Based on 49LT340C (NA) Specification

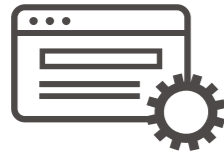
LG webOS Smart Signage Platform

webOS is a web-based multipurpose platform in which a variety of web applications are deployed and implemented. It helps digital signage maximize interaction with customers by going beyond its conventional function of advertisement and information delivery, which ultimately serves as a partner to make your business thrive.



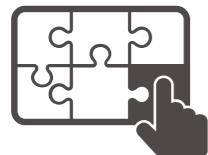
Built-in Player

Powered by high-performance SoCs, it plays content with superb video graphic performance, without the need for a PC. Eliminating the need to purchase peripherals and extra cost for maintenance makes installation simpler and reduces the TCO.



Web-Centric

Using the most common web programming languages, including HTML, JavaScript, and CSS offers familiarity when creating and adapting your applications for the webOS platform.



Simple Customization

Free from any constraints, you can simply add interactive applications or external sensors to webOS signage for a higher level of customer engagement.



Secured Communication

webOS ensures reliable communication between displays and web/data servers by supporting HTTPS and proxy servers.



Content Management

webOS offers an embedded content management system equipped with an intuitive GUI, meaning that first-time users won't have to go through a complicated learning process to manage their displays.



Monitoring and Control

Users can control and monitor the status of multiple displays in different locations in real-time, which is also available on internet-connected mobile devices, allowing you to rapidly respond to emergent situations.

webOS Player

Even if you don't have an LG webOS-based signage or an old version of webOS signage, you can make full use of the benefit of webOS platforms by purchasing only a webOS player. The LG webOS player, WP400, upgrades your signage to webOS 4.0, allowing your old digital signage to perform its best.



WP400

webOS Ver.	webOS 4.0	
Player Dimension (W x H x D)	258 x 36.5 x 186 mm	
Connectivity	Input	HDMI (2), DP, USB 2.0 (2)
	Output	HDMI, DP (Daisy Chain Only)
	External Control	RS-232C In / Out, RJ45 In, IR In
Key Feature	UHD Playback, Embedded CMS, SuperSign Compatibility	

To Become a Partner

<http://webossignage.developer.lge.com/discover/our-partners>

LG is always on the success of our partners' business and keeps our minds open to achieve that success. The webOS Signage Developer Site is a significant part of this. Once you become authorized as a webOS partner, you can not only download the essential sources such as SDK, SCAP libraries, or sample applications, but also get answers and technical support from LG.

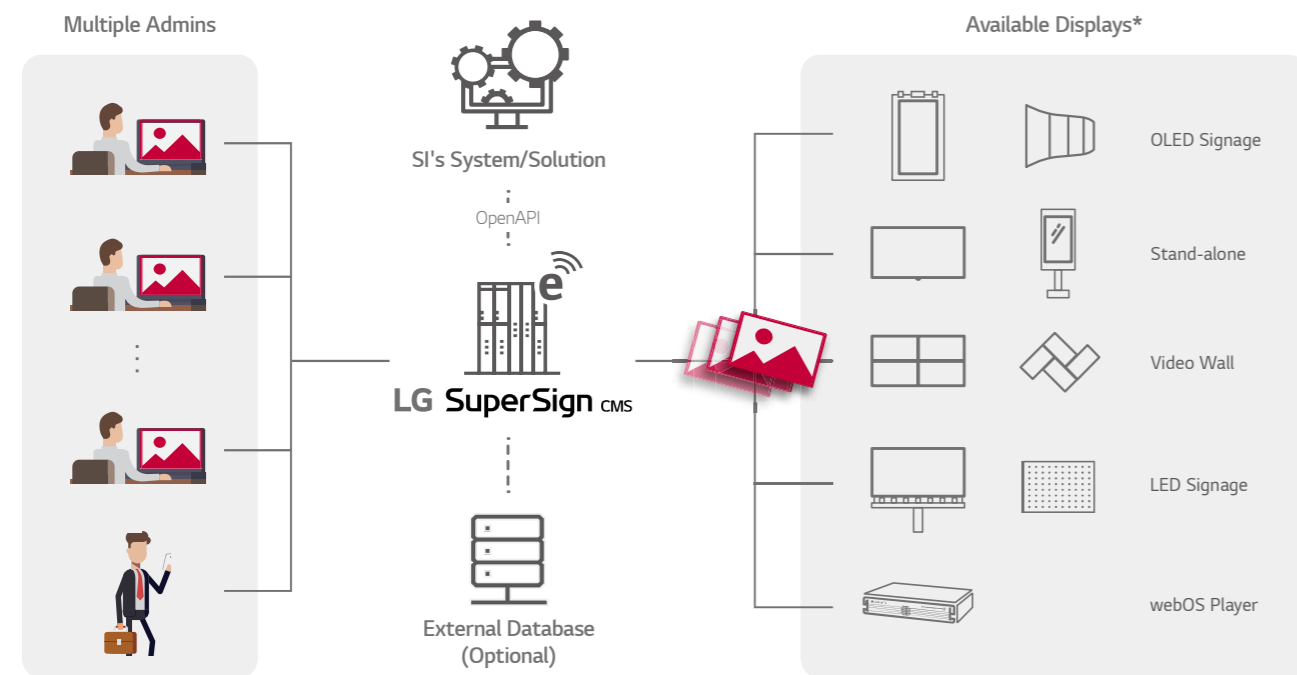
LG SuperSign

Software Solution

SuperSign CMS

Versatile content management with enhanced usability

A variety of LG digital signage, whether stand-alone, outdoor, video walls, or LED signage, can be simultaneously connected and seamlessly managed by SuperSign CMS, with a single server. Administrators are free from the restraints of managing various display types and installation places, and they can operate an array of displays easily using a PC or mobile phone. Going a step further, SuperSign CMS offers OpenAPI, which allows system integrators to consolidate their solutions with SuperSign features and easily optimize them for LG digital signage, expanding the scope of its possible applications.



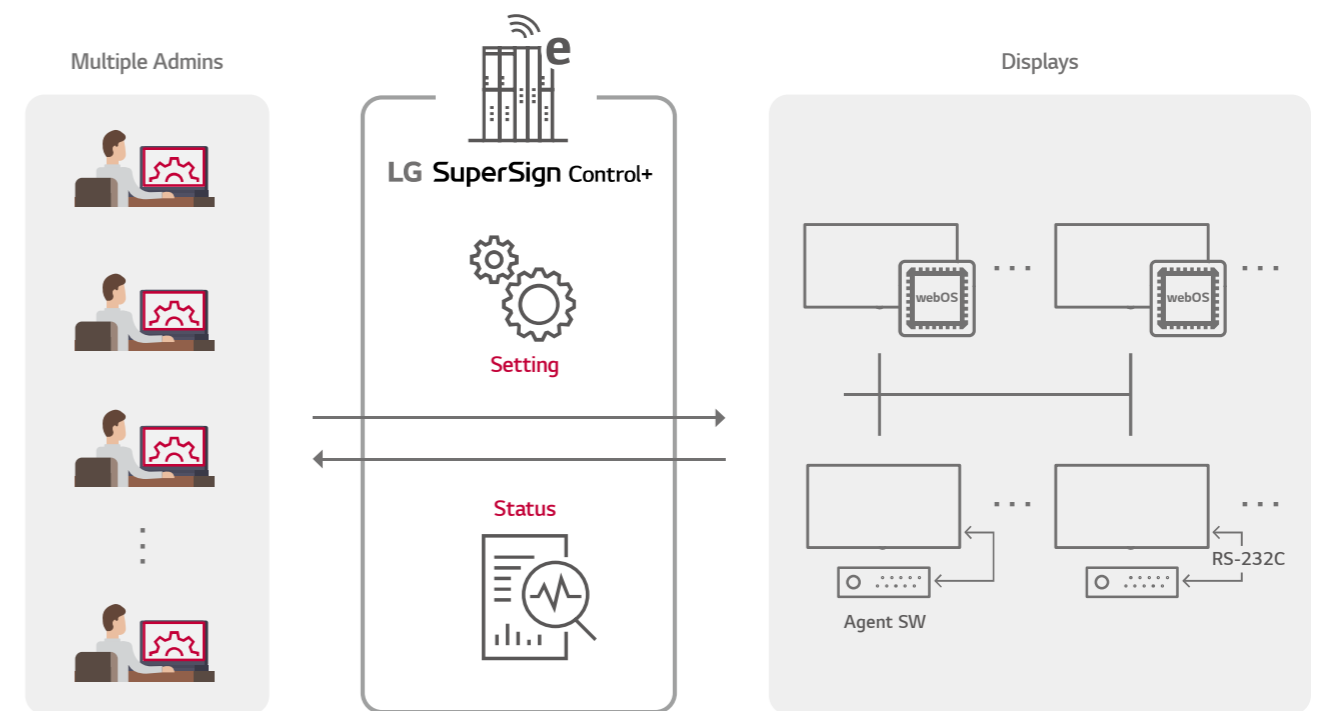
No. of Displays	~ 50	~ 500	~ 1000
Server Construction	Single Server	Single Server	Single Server
Recommended OS	Windows 7, Windows 8.1, Windows 10	Windows 7, Windows 8.1, Windows 10, Windows Server 2012 R2, Windows Server 2016	Windows 7, Windows 8.1, Windows 10, Windows Server 2012 R2, Windows Server 2016
CPU	Intel Core 2 Duo (2.5 GHz) or higher	Intel i7 or higher	Intel XEON E5-2676 v3 8 Core or higher
Memory	4 GB or more	4 GB or more	4 GB or more
HDD	40 GB or more of free space	40 GB or more of free space	40 GB or more of free space
Network Bandwidth	100 Mbps or higher	100 Mbps or higher	100 Mbps or higher
Browser	Internet Explorer 10 or later, Chrome 50 or later	Internet Explorer 10 or later, Chrome 50 or later	Internet Explorer 10 or later, Chrome 50 or later

* Support may differ by model series.

SuperSign Control+

Integrated Monitoring and Real-time Control

SuperSign Control+ is a remote control and monitoring software solution optimized for LG digital signage. It focuses on large scale deployment, supporting more than thousands of displays. Multiple accounts can access the SuperSign Control+ server via network to monitor the status of connected displays in real-time, control them, and adjust their setting values. As an ever-ready solution, it continuously monitors the status of displays and instantly sends out e-mail alerts to administrators when problems occur. Alerts and warnings can be customized according to various parameters such as power, fan and temperature as managers see fit.



	SuperSign Control+ Manager	SuperSign Control+ Agent
Recommended OS	Windows 7 64bit Platform, Windows 10 64bit Platform, Windows Server 2012 R2 64bit Platform	Windows 7, Windows 10, Windows Server 2012 R2
CPU	Intel XEON E5-2676 v3 8 Core or higher	Intel Core 2 Duo (2.5 GHz) or higher
Memory	8 GB or more	4 GB or more
HDD	40 GB or more of free space	40 GB or more of free space
Network Bandwidth	100 Mbps or higher	100 Mbps or higher
Browser	Chrome 50 or later	N/A

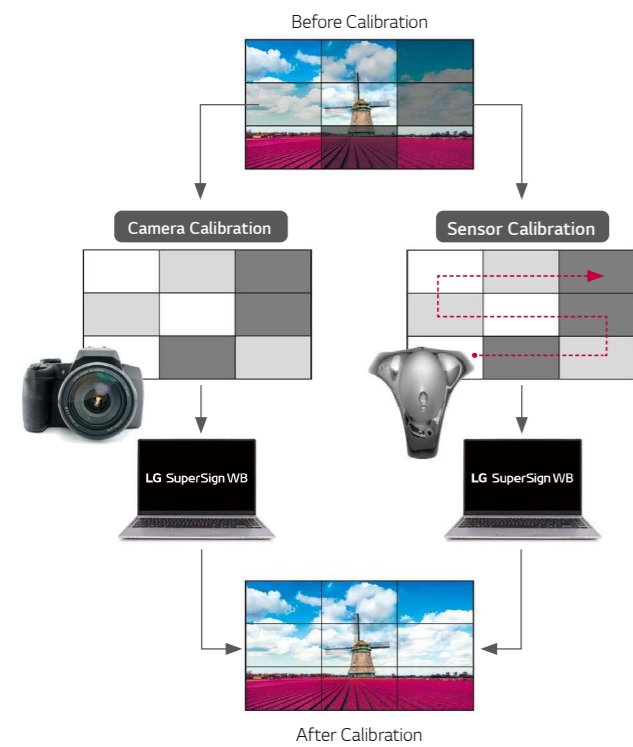
LG SuperSign

Software Solution

SuperSign WB

Achieve Superb Color Consistency

Delivering stable and accurate color among connected displays is a key factor in determining the picture quality of a video wall. SuperSign WB adjusts the white balance to achieve this purpose by supporting camera and sensor calibration. Camera calibration lets users save time and manpower due to a simpler process than traditional sensor calibration, but it can recognize up to 3 x 3 layouts. So sensor calibration is recommended when a video wall layout has an irregular shape or is beyond 3 x 3 tiling.



Camera Calibration

Camera	DSLR Camera, Nikon D5300, D5500, D5600
Lens	AF-S DX NIKKOR 18-55 mm F3.5-5.6G VR II
Tripod	Doesn't matter
USB	One available Camera to PC (USB) connect cable Recommended : USB extender cable 10M (32 feet)
RS232	One available RS232 to PC (USB) connect cable Recommended : RS232 Serial extender cable 10M (32 feet)

Sensor Calibration

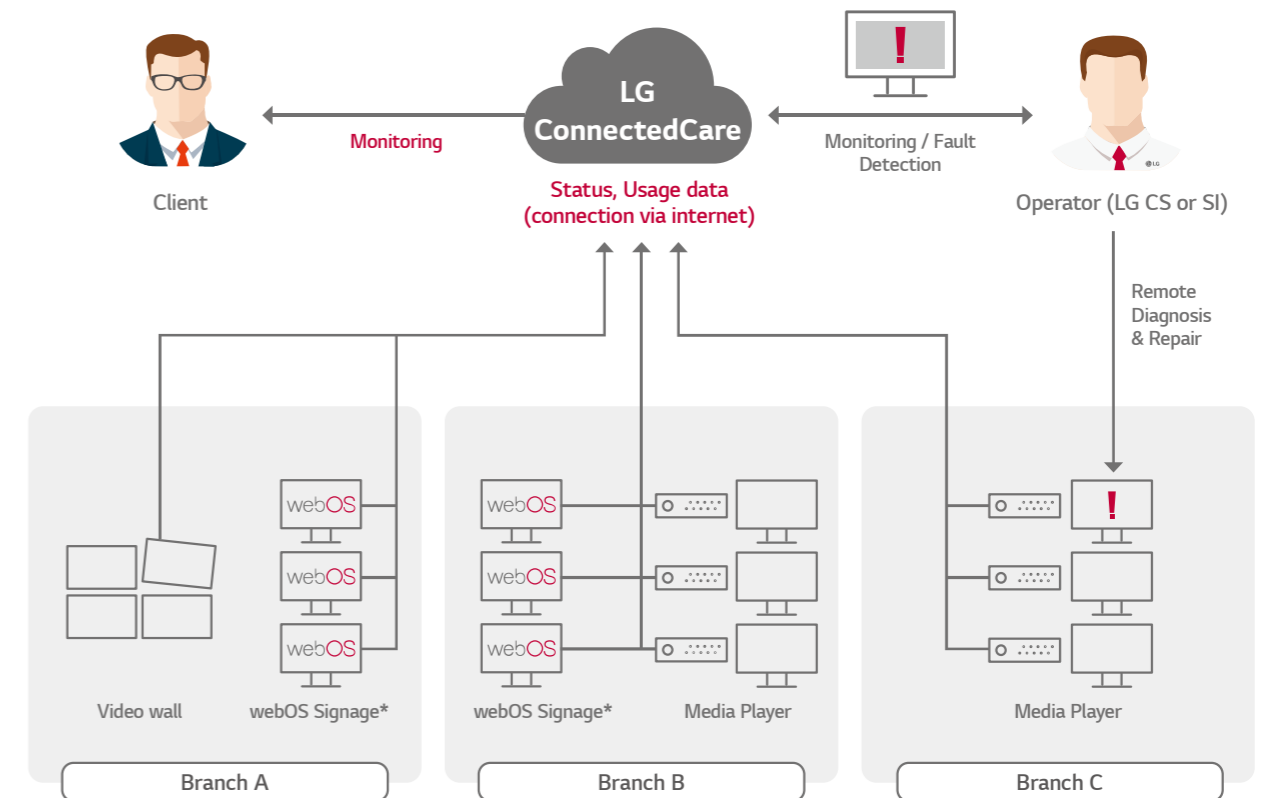
Supported Models	Spyder 3/4/5, i1 Display Pro, ACB8300, CA210/310
------------------	--

- Camera calibration is restricted to video wall models in configurations of up to 3 x 3.
- For optimal calibration results, your camera and video wall must each be facing the front center of the other.
- Install your camera in a horizontal orientation. Positioning your camera vertically may cause monitor detection to fail, which will lead to improper calibration.
- Only video walls configured in a square formation can be calibrated. Irregularly installed video walls are not supported.

LG ConnectedCare

Real-time Monitoring and Fault Detection

LG ConnectedCare is a cloud service solution for remotely managing the operating status of signage displays installed in client workplaces. Through this service, causes of the fault can be easily identified prior to onsite visit, which leads to less time and cost for troubleshooting, ensuring the stable operation of a client's business.



* The versions of webOS and displays supported are currently being expanded. For further details, please contact LG sales in your region.

LG ExtendedCare Service

LG ExtendedCare

LG's true value begins after purchase. LG ExtendedCare plans offer you different levels of protection so that you can choose the perfect way to manage your digital signage.



Longer Warranty Brings You Relief

As digital displays become more advanced prices also increase. LG's extended warranty helps maintain your important asset in its best condition.



Problems Solved as Quickly as Possible

Our LG service team will reach you within Next Business Day depending on the coverage you select, thereby minimizing downtime and quickly getting things up and running again.



Leave It Up to Our Experts

Authorized and experienced LG service technicians will provide repair and reinstallation services so that you don't have to lift a finger.

White Glove Service with Quick Swap	Quick Swap Service	Extended Warranty Service
Next Business Day Exchange	Next Business Day Exchange	Up to 5 years

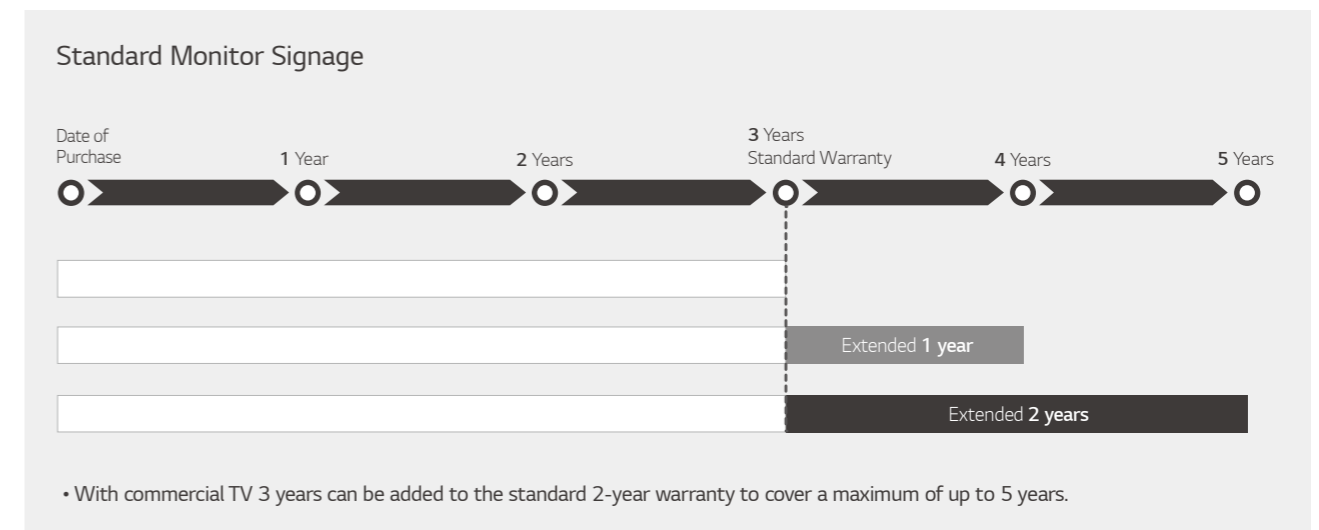
Authorized LG technicians will personally come to your location to exchange or deliver the product, providing an end-to-end service including deinstallation or reinstallation.

LG will ship replacement products for replacement directly to your location so that you can get your device up and running as soon as possible.

You can decide to add additional years to your existing warranty, to enjoy the fundamental care program provided by LG.



Term Option



* The information above is based on general standards. Please note that terms & conditions may vary from country to country.

* Replacement products may be new, reconditioned, refurbished or otherwise factory remanufactured

* The information above is based on general standards. Please note that terms & eligible products may vary from country to country.